

J E S U S   W O N   S O   W E   C A N ' T   L O S E

**WE NEED  
JESUS**  
HEART OF CHAMPIONS

**MEDIA PACK**

How much of your heart should



LOVE

GOD?

How much of your heart should



SEEK

GOD?

How much of your heart should



TRUST

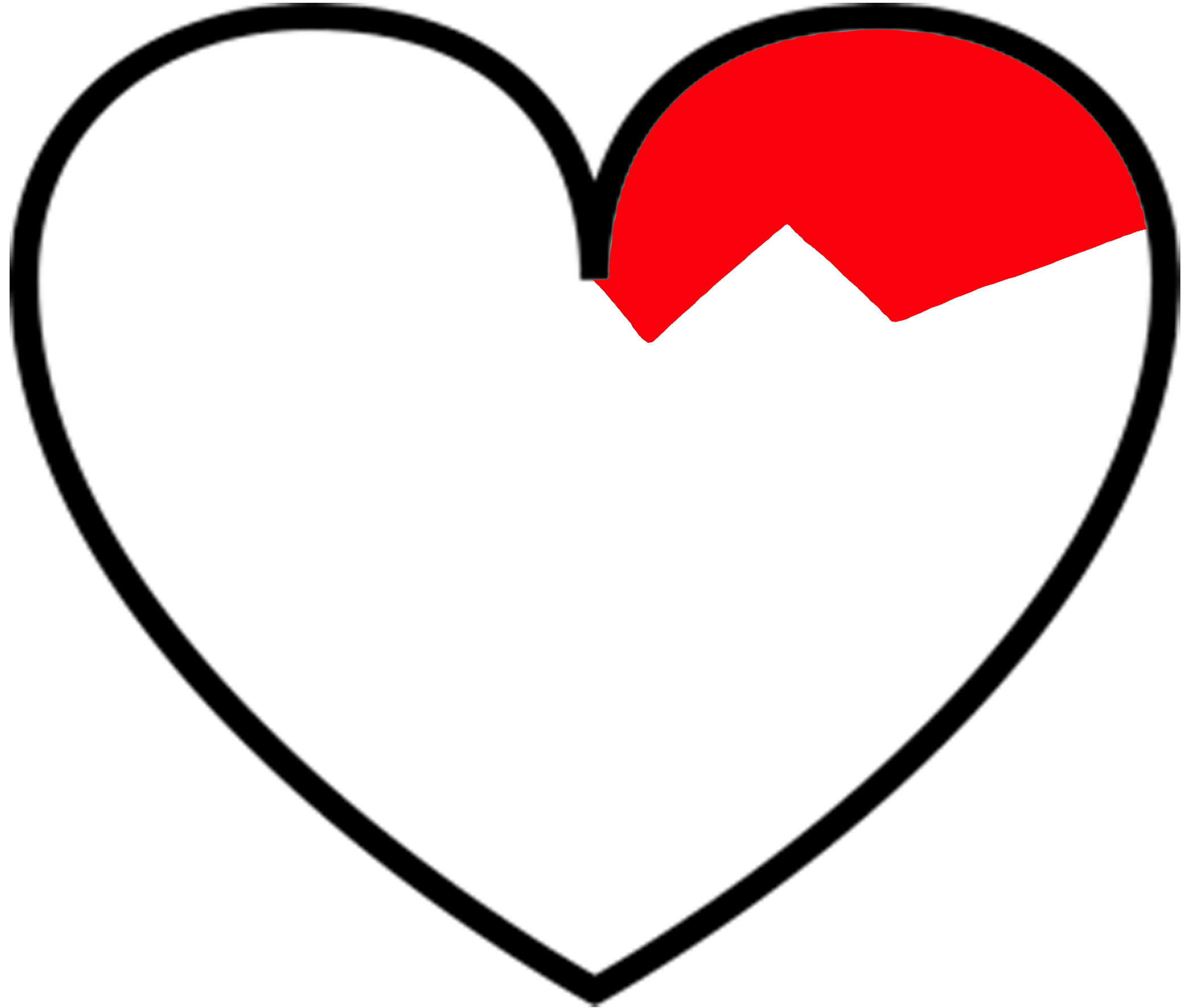
GOD?

How much of your heart should

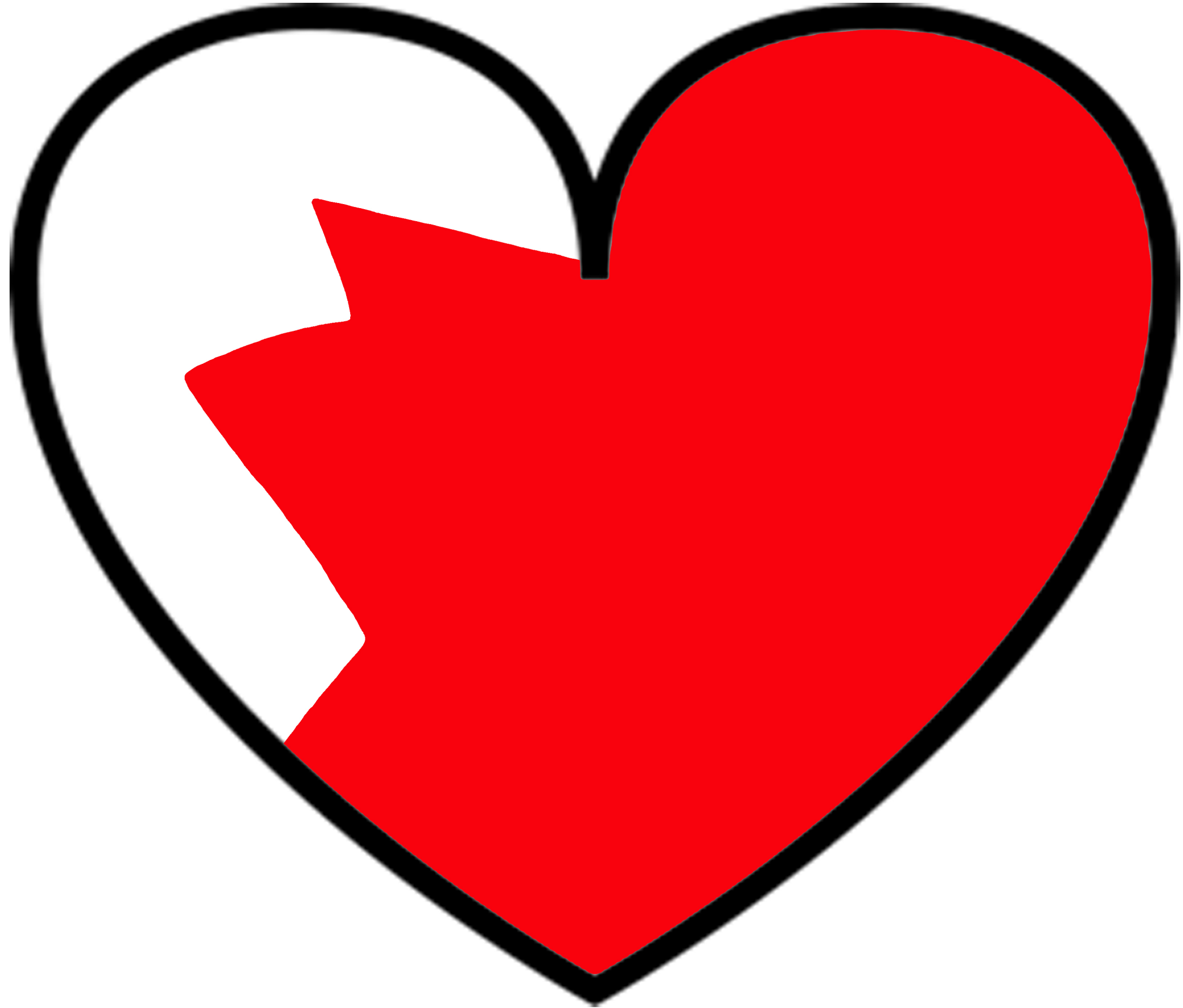


THANK

GOD?











**W  
H  
S**

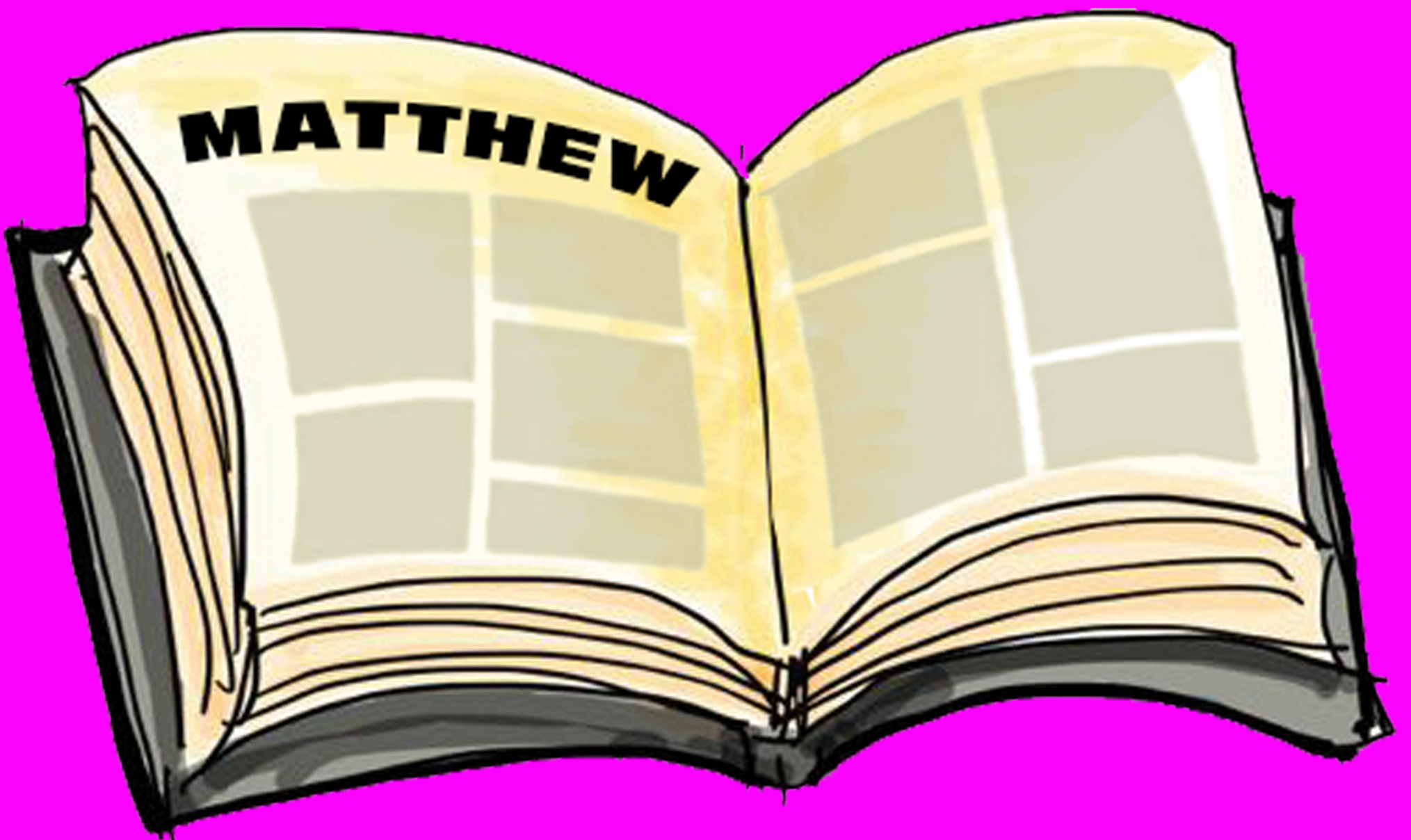
**W  
H  
S**

**W  
H  
S**

**W  
H  
S**

# Matthew

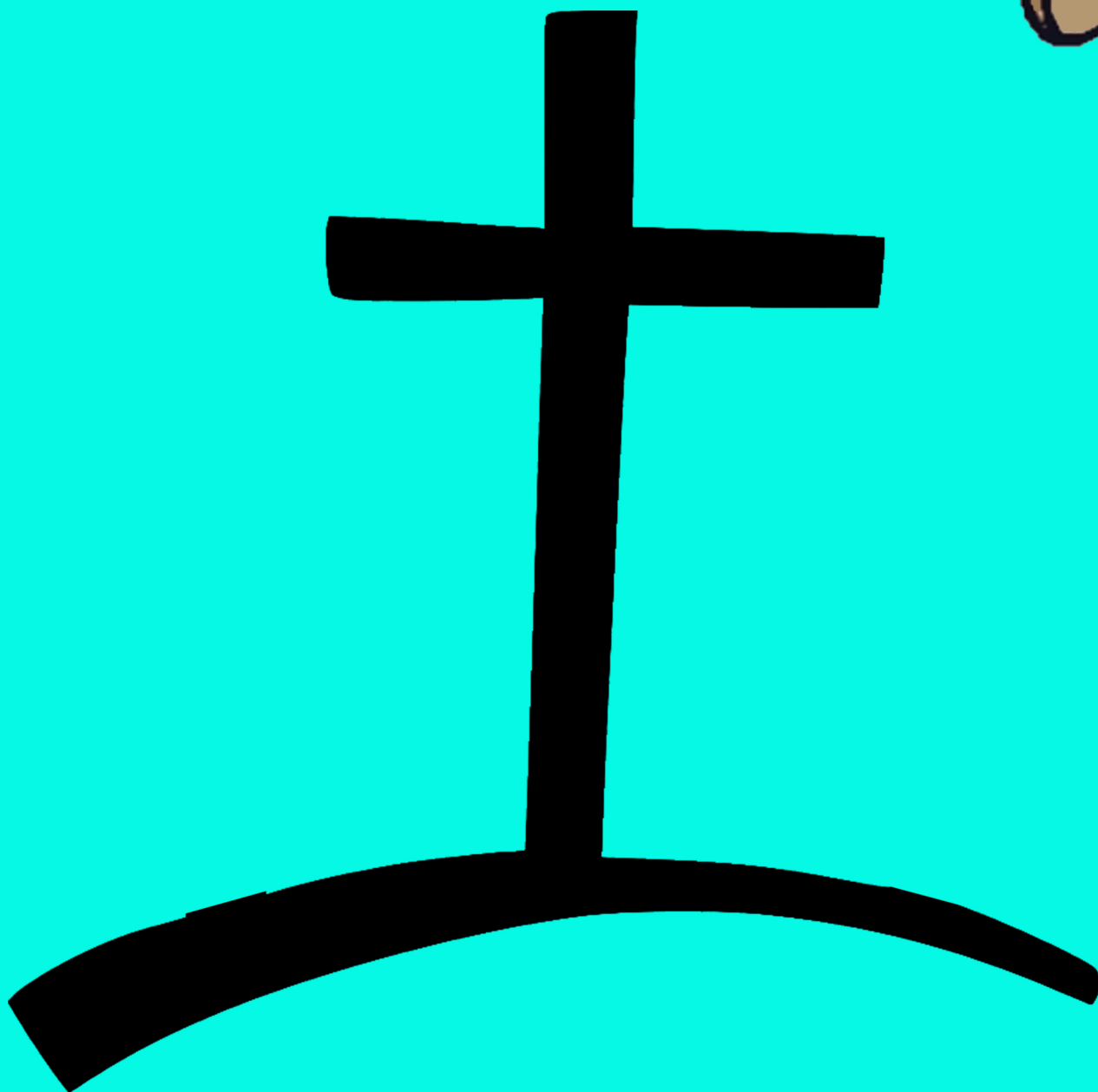
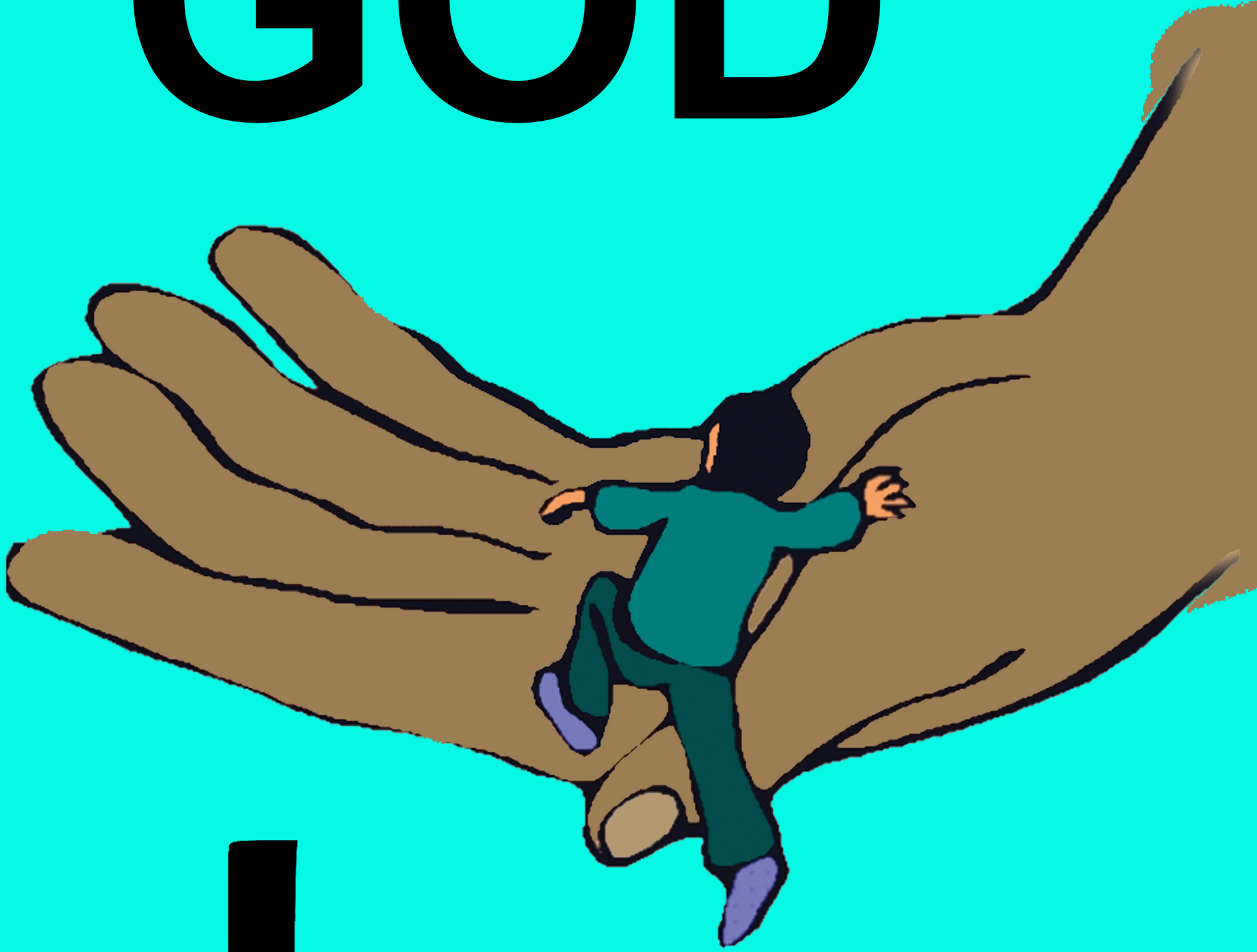
## 22:36-40



**Love**



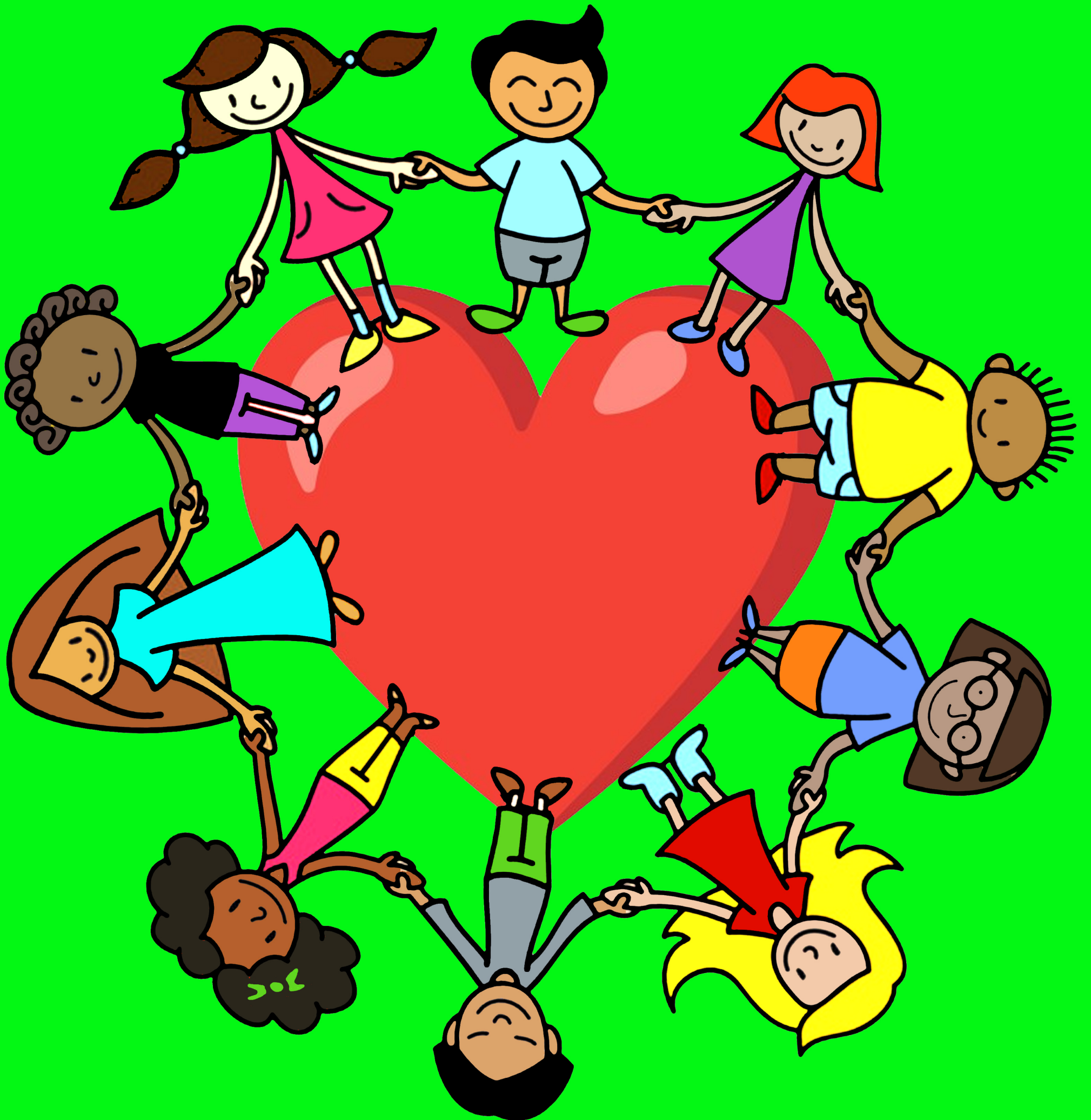
# GOD



**Love**



# others





**Put  
God  
first**





**Worship only Him**



**Don't say bad words**



**Work 6, Rest 1**



**Obey  
your  
parents**



**Harm no one**



**Don't cheat**

**If it's not yours**



**don't  
take  
it**



**Tell the truth**



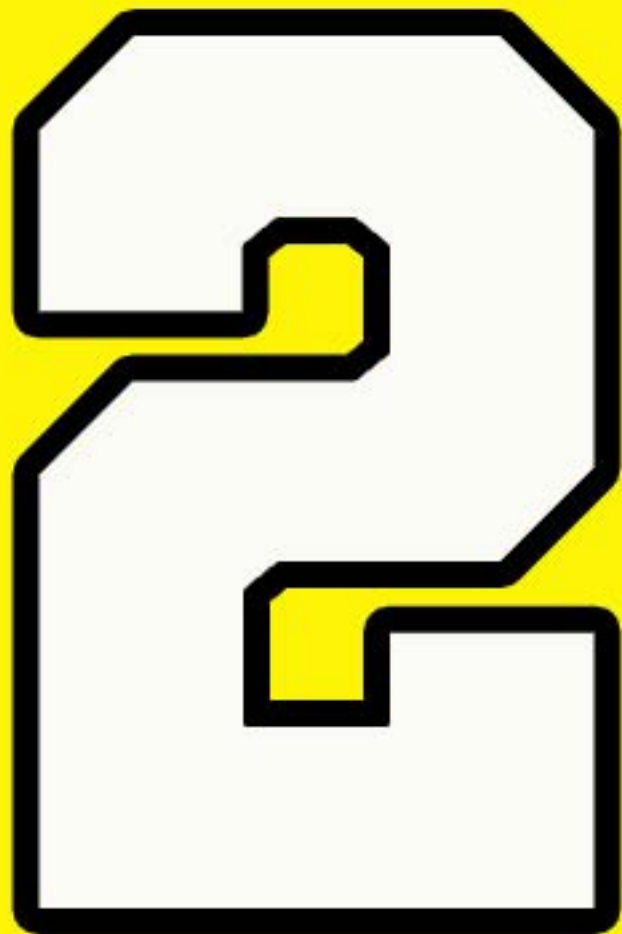


**Don't be jealous**

# GOD'S top 10

- #1 Put God First
- #2 Worship only Him
- #3 No Bad Words
- #4 Work 6 Rest 1
- #5 Obey Your Parents
- #6 Harm No One
- #7 Don't Cheat
- #8 If it's Not Yours Don't Take it
- #9 Tell the Truth
- #10 Don't Be Jealous of Other People's Stuff

**1**



3

4

5

6



7

8

9

10

**LAY YOUR**

**SIN AT**

**THE CROSS**